

8-CUP | STAINLESS STEEL CARAFE

# Coffee Brewer



Model:  
BV1900TS

**HOUSEHOLD USE ONLY**

Customer Service Line:  
1-855-664-1252

2-year limited warranty

[bonavitaworld.com](http://bonavitaworld.com)



- Simple to operate
- Optional pre-infusion cycle for better extraction of freshly roasted coffee
- Large shower head facilitates even coffee saturation
- Advanced heating logic
- Durable stainless steel thermal carafe
- Flat bottom filter

**PLEASE READ THIS MANUAL BEFORE USE. SAVE FOR FUTURE REFERENCE.**

# IMPORTANT SAFEGUARDS

This appliance is for household use only. When using electrical appliances, basic safety precautions should always be followed to avoid fires, electric shocks, burns, or other injuries and damage. Read these operating and safety instructions carefully. Call our customer service number for information on examination, repair, and adjustments; do not attempt to repair the appliance yourself.

## Read all instructions

- Do not touch hot surfaces - use the handles or knobs.
- To protect against fire, electric shock and injury to persons do not immerse cord, plugs or the appliance in water or other liquids.
- Close supervision is necessary when any appliance is used by or near children.
- Unplug from outlet when not in use and before cleaning. Allow to cool before putting on or taking off parts, and before cleaning the appliance.
- Do not operate any appliance with a damaged cord or plug or after the appliance malfunctions, or has been damaged in any manner.
- Return appliance to the nearest authorized service facility for examination, repair or adjustment.
- The use of accessory attachments is not recommended by the appliance manufacturer and may result in fire, electrical shock or personal injury.
- Do not use outdoors or in damp areas.
- Do not let the cord hang over the edge of a table or counter.
- Do not place appliance on or near a hot electric or gas burner, or in a heated oven.
- To disconnect the appliance, turn any control to off, then remove plug from the wall outlet.
- Do not use this appliance for anything other than its intended use.

## Additional Safeguards

- Place the appliance on a flat level surface.
- Remove the carafe lid before brewing.
- Do not attempt to operate the appliance without putting water in the tank. Only fresh, filtered, cold water should be used in the tank. Do not use hot water.

# SAVE THESE INSTRUCTIONS

- Do not use the carafe if it has a loose or damaged handle.
- Scalding may occur if the brewer lid is removed during the brewing cycle.
- Do not clean carafe with abrasive cleansers, steel wool pads, or other abrasive material.
- Do not remove the bottom cover on the appliance. There are no user serviceable parts inside.
- The carafe is designed for use with this appliance. It must never be used on a range top.
- Make sure that the voltage in your home corresponds with the voltage indicated on the bottom of the appliance.
- If the carafe sustains a heavy impact, it may be damaged. Check for cracks or damage before using, especially if there are signs of leakage.
- Never lay the carafe on its side when it is full, even if the lid is firmly attached.
- Children should be supervised to ensure that they do not play with the appliance.
- Never remove the stainless steel carafe or filter basket during brewing cycle.

## **Power Cords**

1. A short power-supply cord is provided to reduce the risks resulting from becoming entangled in or tripping over a longer cord.
2. Longer detachable power-supply cords or extension cords may be used if care is exercised in their use.
3. If a long detachable power-supply cord or extension cord is used:
  - a. The marked electrical rating of the detachable power-supply cord or extension cord should be at least as great as the electrical rating of the appliance
  - b. If the appliance is of the grounded type, the extension cord should be a grounding-type 3-wire cord; and
  - c. The longer cord should be arranged so that it will not drape over the counter top or table top where it can be pulled on by children or tripped over.

# **SAVE THESE INSTRUCTIONS**

# LIMITED WARRANTY

2 year limited warranty from the date of original purchase.

1. This warranty extends only to the original retail purchaser or gift recipient. Keep the original sales receipt, as proof of purchase is required to make a warranty claim.
2. Defects that occurred due to improper connection, improper handling, or repair attempts by non-authorized persons are not covered by the warranty. The same applies for failure to comply with the use of cleaning and decalcifying agents that do not correspond to the original specifications.
3. This device was designed and built for household use only. It is not suited for other uses.
4. Damages which are not the responsibility of the manufacturer are not covered by the warranty. This is valid especially for claims arising from improper use (e.g. operation with insufficient current or improper voltage).
5. The warranty becomes void if repairs are carried out by third parties not authorized by the manufacturer and/or if spare parts are used other than the original ones.
6. Please call 1-855-664-1252 or email [customersupport@bonavitaworld.com](mailto:customersupport@bonavitaworld.com) for warranty claims.

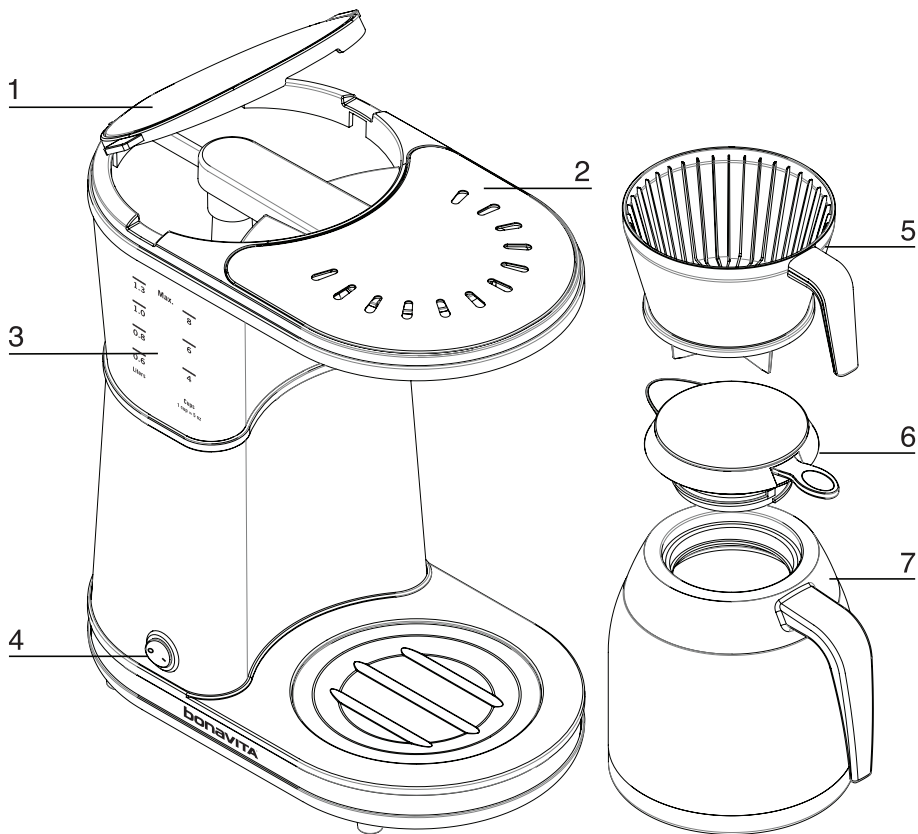
# BREWING A BETTER CUP

- This Bonavita coffee brewer is engineered to heat the brewing water to within the 195°- 205°F (91°-96°C ) range. The heating elements in the Bonavita coffee brewers are designed to deliver the correct temperature water over the correct brewing time.
- For ideal extraction levels, brew your coffee in 6-8 cup batches, with fresh, filtered, cold water.
- Brewing time is about 6 minutes for 8 cups of coffee. This will allow for proper water flow and saturation time.
- The quality of the coffee has a great impact on brewed coffee's flavor. Using freshly roasted beans and grinding the beans just before brewing are important considerations. We recommend using coffee within a couple of weeks of its roast date. Air tight storage will help extend your coffee's lifespan.
- Grinding coffee is another key point on the timeline of flavor and perishability. Once coffee is

ground the air begins to attack essential oils and other volatile flavor components. It's only a matter of hours before most of the ground coffee's aroma has evaporated. Sometimes pre-grinding can't be avoided, but if it can, delay until shortly before brewing.

- For the most consistent results, Bonavita recommends measuring coffee by weight, using 10 grams of coffee per cup.
- Measuring coffee by volume is less consistent. For example, two tablespoons of drip grind coffee can weigh between 6 grams of dark roast coffee to 11 grams of light roast coffee. Bonavita recommends beginning with two level tablespoons of drip grind coffee as a starting point with your preferred roast, and adjust according to your taste.
- Keep the filter basket, water tank, and carafe clean.
- For maximum heat retention we recommend rinsing the carafe with hot water shortly before the brew begins.

# BREWER DIAGRAM



1. Water tank lid
2. Brewer lid
3. Water level indicator
4. On/off switch
5. Filter basket
6. Carafe lid
7. Stainless steel thermal carafe

## Technical Data

Rated voltage: AC120V, 60 Hz

Rated power input: 1500W

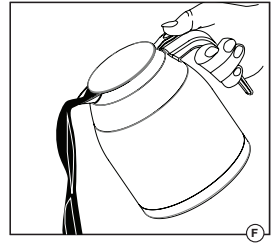
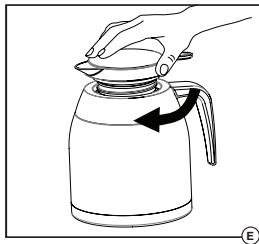
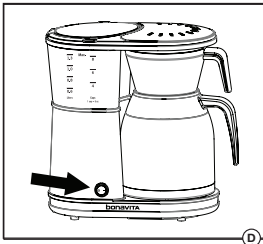
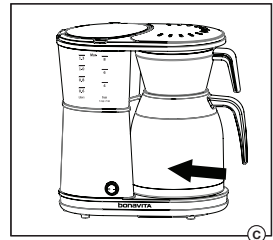
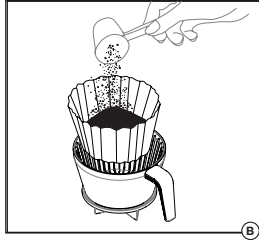
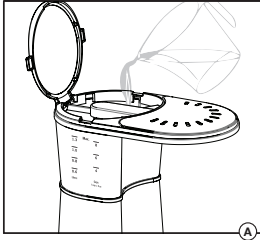
# ABOUT YOUR BONAVITA COFFEE BREWER

The heaters in the Bonavita coffee brewers are designed to deliver the correct temperature water over the correct brewing time. For ideal extraction levels, brew your coffee in 6-8 cup batches. Brew with fresh, filtered, cold water whenever possible. Brewing time is about 6 minutes for 8 cups of coffee. This will allow for proper water flow and saturation time.

## **Before first use**

1. Remove packaging materials, labels, and stickers from the coffee brewer.
2. Wash filter basket and stainless steel thermal carafe with a mild dish detergent.
3. Read the BREWING INSTRUCTIONS section.
4. Clean the brewer by filling the water tank with fresh, filtered, cold water to the MAX line.
5. Turn on the brewer, and allow the water to run through a brew cycle.
6. Let the brewer cool down for 5 minutes before repeating the process at least 2 more times before brewing coffee.

# BREWING DIAGRAM



## Brewing instructions

1. Set the brewer on a flat and steady surface.
2. Remove the carafe and filter basket from the brewer.
3. Raise the lid of the water tank and pour in the required volume of fresh, filtered, cold water to the desired batch size. Do not fill above the MAX line. **(Fig. A)**.
4. Place a V style filter in filter basket. We recommend a #4 Melitta filter.
5. Scoop ground coffee into the filter **(Fig. B)**, using 10 grams of coffee per cup.
6. If you measure coffee by volume, begin with two level tablespoons, and adjust according to your taste. This amount will vary depending upon your preferred roast. For example, two tablespoons of ground coffee can weigh between 6 grams of dark roast coffee to 11 grams of light roast coffee.
7. Place the filter basket on the carafe (without lid) and put both back into the brewer **(Fig. C)**.
8. Turn the brewer on. The on/off switch will stay lit during the brewing process **(Fig. D)**. The brewer will automatically shut off when the brewing cycle is complete. It can also be switched off manually at any time by pressing the on/off switch.
9. After the brewing process ends, remove the coffee-filled carafe



and the filter basket from the brewer.

10. For maximum heat retention place the lid on the carafe shortly after the brew cycle is complete. **(Fig. E).**
11. To dispose of the used filter, dump it from the filter basket, rinse out filter basket, and set aside to dry.
12. To pour coffee from the carafe, depress the lever on the carafe lid. The lid must be tightened firmly to allow for one-handed pouring **(Fig. F).**

**Optional Pre-infusion Mode** – for brewing freshly roasted coffee.

1. Press and hold the on/off switch for 5 seconds.
2. It will flash indicating you have chosen the pre-infusion mode.
3. Follow the BREWING INSTRUCTIONS, making sure you press the on/off switch to begin brewing.
4. In pre-infuse mode, the on/off switch will flash during the brew cycle.
5. The brewer will remain in pre-infusion mode until the mode is turned off or the brewer is unplugged.
6. You can turn off the pre-infusion mode by pressing the on/off switch until the light flashes (5 sec.).

# CLEANING AND MAINTENANCE

Proper care will ensure years of service from this coffee brewer. Aside from keeping the brewer clean and descaling when necessary, there is no user maintenance required.

This brewer contains no internal user serviceable parts. Leave servicing and repairs to qualified personnel.

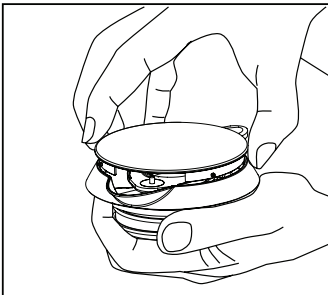
**CAUTION:** Always unplug the coffee brewer before cleaning.

The filter basket may be cleaned in the top rack of a dishwasher.

## Cleaning the Carafe Lid

The carafe lid should be disassembled for cleaning, and is top rack dishwasher safe.

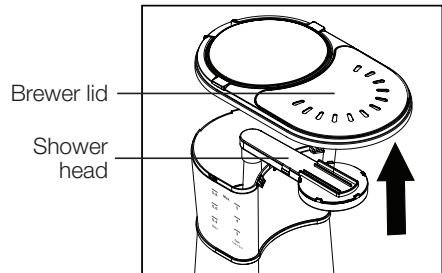
1. Twist the lid cap counter clockwise and lift off.
2. Clean inner parts of lid.
3. Align cap recesses with spout and carafe lid lever and press on to lid.
4. Twist cap clockwise to lock in place.



## Cleaning the Brewer Lid and Shower Head

The brewer lid and shower head are removable, and are top rack dishwasher safe.

1. Pull the front edge of the brewer lid upwards to remove.
2. Remove the shower head.
3. Clean.
4. Re-install shower head separately from brewer lid, for better shower head alignment.
5. Re-install brewer lid.

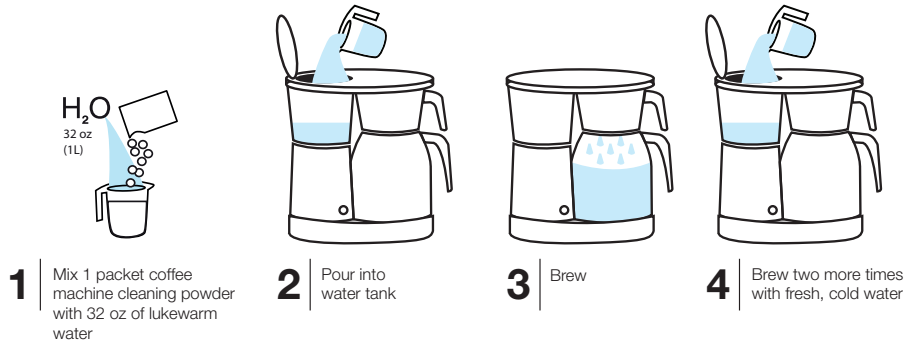


## Cleaning the Coffee Brewer

Use a soft, damp cloth and a mild dish cleaning liquid for cleaning the housing.

We recommend using a clean measuring cup or pitcher to fill the tank when brewing. Following this recommendation, your Brewer may only require periodic descaling.

If you use your coffee carafe to fill your water tank, you may introduce coffee residue into the water tank, which may lead to coffee oil buildup. If filling with your carafe, we recommend cleaning with Full Circle coffee machine cleaning powder once a month.



## Cleaning the Stainless Steel Thermal Carafe

The carafe will last for many years if handled properly.

If coffee is left in the carafe for too long, the stainless lining will become discolored. For cleaning, we recommend using Full Circle coffee machine cleaning powder.

Do not use scrubbing pads or hard bristled brushes, which will damage the stainless lining.



## Descaling

In hard-water areas, scaling from limestone content in the water may build up in your brewer. Scaling can lead to extended preparation time and possible damage to your Bonavita coffee brewer.

We recommend that you descale your brewer after every 100 brew cycles, or once every three months. However, if the brewer makes an unusually loud noise, extends brew time, or fails to achieve the recommended water temperature of 195°-205°F (91°-96°C), you may need to descale more often.

We recommend using Full Circle descaling powder, which is designed to break down mineral build-up inside your brewer to ensure great coffee and consistent functionality. Do not use vinegar, which may not effectively descale your brewer, and may leave behind an odor that can impact the flavor of your coffee.



- 1** | Mix 1 packet coffee machine cleaning powder with 32 oz of lukewarm



- 2** | Pour into water tank



- 3** | Brew



- 4** | Brew two more times with fresh, cold water